

## LAKHI BLOWER INDUSTRIES

**LAKHI**

*Mfrs. of Blowers & Air Pollution Control Equipments*

J-3003, 4<sup>th</sup> Phase, GIDC., VAPI - 396 195 (Gujarat)

Tel.: 0260 2422758 - Fax No.: 0260 2428941

E mail : lakhiblower@gmail.com / lakhi\_blower@yahoo.co.in

Website : lakhiblower.com



## About Us

*We were established in the year since 1994. The company was established with expertise in fabrication, erection & commissioning job in the field of Air pollution Control & Ventilation System. With our established reputation and growing demands in the field of Air pollution control system in various sector of India. LAKHI BLOWER INDUSTRIES was formed with increased Manpower and infrastructure to offer prompt technical support to the customers providing engineering drawings and expert technical personnel for execution of the projects. The new millennium has brought challenges with different colors taste & ideas. Entrepreneurs need to find new vistas and develop varied niches to exceed customer's expectation which prompted us to redress.*

## Our Vision

*To be a respected world class company and the leader in Indian Manufacturing Company in the field of Air Pollution Control Equipment in quality , profitability, service & customer satisfaction.*

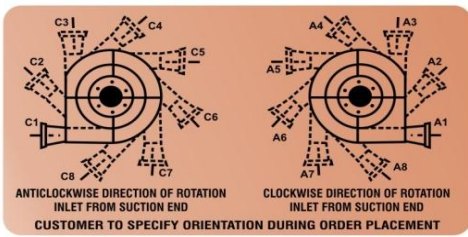
## Our Mission

*We are to prevent the Industrial Air Pollution and Committed to our stake holders to create value*

*For their investment.*

## Our Core Competence

- *A tradition of excellence.*
- *A clear vision in setting goals.*
- *Acknowledge change & redress.*
- *A team of quality people.*
- *Always in search of customers need*
- *Assurance of customers delight.*



## LAKHI BLOWER INDUSTRIES



*Mfrs. of Blowers & Air Pollution Control Equipments*

J-3003, 4<sup>th</sup> Phase, GIDC., VAPI - 396 195 (Gujarat)

Tel.: 0260 2422758 - Fax No.: 0260 2428941

E mail : lakhiblower@gmail.com / lakhi\_blower@yahoo.co.in

Website : lakhiblower.com



### ***Our Standard Range of Products.***

- Centrifugal Blowers
- ID Fans/ FD Fans/ P A Fans/ M G Blowers
- Fume Extraction Systems.
- Bag Filters & Dust Collectors (In Various Ranges)
- Dust collector Silo
- Turbine Blowers/ Regenerative Blowers (Ring Blowers)
- Air Curtains.
- Tube Axial Flow Fans
- Rotary Air Locks.

### ***Systems on Turnkey basis can also be provided such as***

1. Air Pollution control system.
2. Dust extraction & collection system.
3. Fumes extraction & scrubber
4. Industrial Ventilation & Cooling Humidification.
5. Pneumatic Conveying System.

*We believe that you will forward your valuable enquiries , to enable us to quote for the same.*

*Thanking you in anticipation.*

*Sincerely Yours,*

*FOR LAKHI BLOWER INDUSTRIES.*

*JITENDRA YADAY*

*(MARKETING MANAGER)*



# LAKHI BLOWER INDUSTRIES



AIR POLLUTION  
CONTROL  
EQUIPMENTS &  
SYSTEMS





**LAKHI  
BLOWER  
INDUSTRIES**

### AXIAL FLOW FANS / TUBE AXIAL FANS / STANDARD AXIAL FLOW FANS

For Ventilation & Air conditioning requirements where many air volume & pressure combinations are required, as well as special industrial installations. Through AXIAL FLOW FANS the air or gas flows parallel to the impeller axis i.e. the suction and the discharge are in the same line.

All AXIAL Flow fans have cast aluminum alloy impellers with high efficiency aerofoil section blades. They are designed for an optimum relation between air quantity, pressure and power consumption.

Cast aluminum impeller is directly mounted on the motor shaft in a casing of sheet welded construction with flat iron flanges.

**Range :** 110 - 1700 mm Sweep

**Capacity :** Up to 1,00,000 m<sup>3</sup>/hr

**Operating Pressure:** 5 - 50 mm W.G.P. static head.

**Drive :** Direct drive / V- Belt drive / Direct drive



### CENTRIFUGAL BLOWER

We are manufacturing Fan & Blower for the last three decades for various types of industries & machines. During this period the company has developed expertise in the design and manufacture of quality air moving equipment and continues to advance by implementing a philosophy that stresses quality in all of its operations. Our products are known for their rugged construction, high efficiency and reliability of operation. Our Fan & Blower offers flexibility in design and construction of fans coupled with superior service before and after the sale. Now Fan and blower division of our company is offering its following quality air moving equipments for commercial and industrial applications.

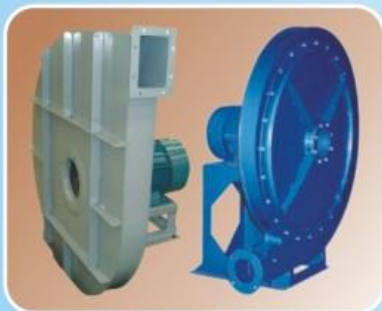


### HIGH PRESSURE BLOWERS

**Application :** For combustion air in foundries / furnaces, glass cooling, during chips, smoke abatement conveyance of gases/material.

**Capacity :** 200- 5000 m<sup>3</sup>/hr

**Pressure :** 125-1200 mm W.G.P.



HIGH PRESSURE BLOWERS

### MEDIUM PRESSURE BLOWERS

**Application :** For fume extraction, long distance ventilating, filtrations, pneumatic converging.

**Capacity :** 200- 10000 m<sup>3</sup>/hr

**Pressure :** 200-500 mm W.G.P.



MEDIUM PRESSURE BLOWERS

### LOW PRESSURE BLOWERS

**Application :** For General ventilation, fume & vapour, smoke & dust exhaust process drying & Cooling, dusty air or material conveying.

**Capacity :** 1000- 50000 m<sup>3</sup>/hr

**Pressure :** 10 - 200 mm W.G.P



LOW PRESSURE BLOWERS

## DUST COLLECTING SYSTEM

Material not passing through Blower. It can be supplied with a mechanical shaker or with Pulse Jet automatic cleaning.

Dust collectors are useful for Foundries, Machine Shops, Chemicals, Pharmaceuticals, Foods, Textiles, Dyes, Paints & for control of any kind of dust creating points. Rubber industries, Plastic industries, PVC Extrusion etc.

**Capacity :** 20 Ltrs. to 100 Ltrs.  
200 CFM to 1200 CFM



## PULSE JET BAG FILTERS – ONLINE

The pulse jet bag filter in its most rudimentary form basically consists of the filtration elements housed in a casing. Below this casing is a hopper with a discharge valve, to continuously remove the dust that is collected on the bags. The entire unit is supported from the ground on structural legs. A caged ladder provides access to the top of the unit for maintenance. The dust laden air enters through the hopper by suction (normally) or (positive pressure). The heavier dust particles fall off at the entry itself, while the lighter dusts get carried upward to the bags. 1) Regular Hopper Entry Opened up image The dust gets deposited on the outer surface of the bags and the clean air moves upward from the center of the bags through the outlet plenum to the top air outlet. This is known as filtration. The dust collected on the outer surface of the bags is removed in a pre-determined cycle by a momentary pulse of high-pressure compressed air. The compressed air moves from an air reservoir or compressed air header via the particular pulse valve into the compartment manifold and thereon into the bags in the row beneath it. The pressurised entry of compressed air through the venturis into the bags, inflate the latter. And the dust cake formed on the bag surface slides down in the form of flakes. The cages help the bags retain their original shape once the effect of the compressed air is gone. This completes the cleaning process. The dust slides down the hopper walls to the rotary air lock valve. The latter is a rotating device which discharges the dust continuously, all the while maintaining an air seal. Our range in above construction covers both completely standardized and pre-engineered Bag Filters - the AJ / AP series – up to a particular size with customized variations also available beyond this.



### Special Features:

- Modular Design with no moving parts.
- Low maintenance and replacement of fabric bags are easy and quick.
- Fair air to filter ratios.
- Assures longer life of bags.
- Variety of fabric material.
- Fabric bags are normally of cotton woven satin cloth.
- Down flow principle.
- Assures high collection efficiency.
- Cartridges are normally of synthetic.
- Webbed material. However, other materials can be supplied to suit individual application.
- Quality and reliability.
- Dependable products with inbuilt quality for trouble-free operation.



# AIR POLLUTION CONTROL EQUIPMENTS & SYSTEMS

## CYCLONE SEPARATOR

Cyclones operate to collect heavy duty dust Removal from individual sources like Drying, Grinding Machines which are create a unhealthy working condition.

**Capacity :** 1,000 - 48,000 m<sup>3</sup>/hr

**Pressure :** Drop max. 100mm W.G.P.

**BAG filters** for collection efficiency 95.5% - in particle size 1 to 2 Microns.

**WORKING PRINCIPLE :** Collection of dust in a cyclone separator is based on the action of inertial (Centrifugal) forces upon dust particles.

Cyclone separators are normally used for the collection of coarse dust particles. The dusty air is introduced in the cyclone separator from the top through the inlet pipe which is tangential to the cylindrical portion of the cyclone. Thus the gases move downwards in whirling motion forming a peripheral vortex and giving rise to centrifugal forces, resulting in throwing of dust particles towards the wall of the cyclone and moving downwards in to the hopper. The gases after reaching the end of the conical portion changes its direction and moves upwards towards the outlet forming an inner vortex. Due to this upward movement of gases against gravity more dust particles are separated and fall into the subsequent removal.

**APPLICATION :** | Pneumatic Conveying Systems | Cement Industries | Pharmaceuticals | Pulverizing System | Industries | Coal Handling Systems | Flour Mills

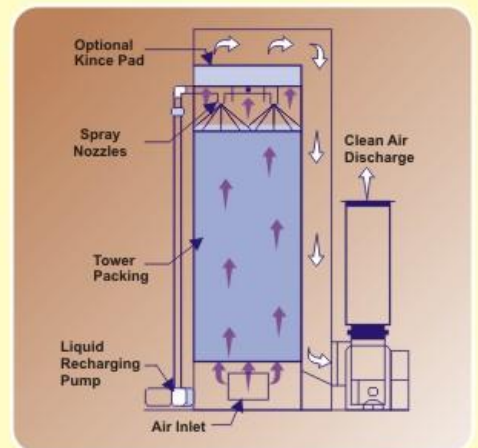


## SCRUBBER SYSTEM

Efficient units for removing soluble odours and fumes with capacities from 100 CFM to 75,000 CFM.

### Applications :

Acid fumes, chemical fumes, chemical odours, food processing odours, formaldehyde fumes, metal finishing fumes, steel processing fumes, sulphur based fumes.



## FUME and GAS SCRUBBER

For Particulate collection & treatment of harmful gasses in chemical, fertilizer, textile & material treatment Industries. Various design offered include direct contact, Ventury, High fog, Bubble bath.

**Capacity :** 50 to 50000 m<sup>3</sup>/hr.



**LAKHI  
BLOWER  
INDUSTRIES**

## TURBINE BLOWER ( REGENERATIVE BLOWERS / EXHAUSTERS)

### PRINCIPLE OF OPERATION :

These blowers consist of a dynamically balanced impeller which revolves in a stator cum -compression chamber having very fine clearance between them. The impeller is fitted directly on a vertical shaft and is driven by flange mounted motor. Both the suction and pressure openings are located on the outer periphery of the stator to reduce the impedance to air flow thereby developing vacuum and pressure.

### FEATURES :

- No lubrication is required since there is no friction and hence the air is absolutely oil free.
- Practically nil maintenance cost.
- Extremely compact unit and can be mounted inside equipment.
- Silencer (Optional) ensures low noise.

### APPLICATION :

- Aeration in effluent treatment plants.
- Agitation of chemicals, electroplating chemicals etc.
- Air pollution monitoring equipment.
- Industrial Vacuum Cleaners.
- Furnace Air Supply.
- Pneumatic Conveying
- Socks Knitting Machine
- Fish Farming & Hatchery



### SINGLE STAGE

Model No.	Capacity m <sup>3</sup> /hr max.	Pressure M Bar Max.	Vacuum M Bar Max.	Motor HP/3000 RPM
TBS - 50	70	80	70	0.5
TBS - 100	200	130	120	1.0
TBS - 200	300	160	140	2.0
TBS - 300	400	200	180	3.0
TBS - 500	500	250	230	5.0
TBS - 750	600	270	250	7.5
TBS - 1000	800	350	300	10.0
TBS - 1500	1000	400	350	15.0
TBS - 2000	1500	450	400	20.0

### DOUBLE STAGE

Model No.	Capacity m <sup>3</sup> /hr max.	Pressure M Bar Max.	Vacuum M Bar Max.	Motor HP/3000 RPM
TBD - 50	50	130	120	0.5
TBD - 100	100	220	200	1.0
TBD - 200	150	280	260	2.0
TBD - 300	200	320	300	3.0
TBD - 500	250	400	350	5.0
TBD - 750	300	450	400	7.5
TBD - 1000	400	500	450	10.0
TBD - 1500	500	550	500	15.0
TBD - 2000	700	600	550	20.0

## HOPPER AUTO LOADER

For conveying of plastic granules from bin to hopper of plastic processing machines. Reduces wastage of granules, reduces labour casts, reduces handling times, improves productivity.

**Batch Capacity :** 100kg/hr to 1000kg/hr

**Conveying Height :** 3 to 6 meter



## ROOTS 3 - LOBE BLOWERS AND VACUUM PUMPS

- The standard package is single stage arrangement.
- Rigid common base makes the package run at least vibration.
- Special motor base gives the most possibility for different motor size and make the motor alignment very easy.
- Two stage models are available on request for pressure over 1kg/cm<sup>2</sup>.



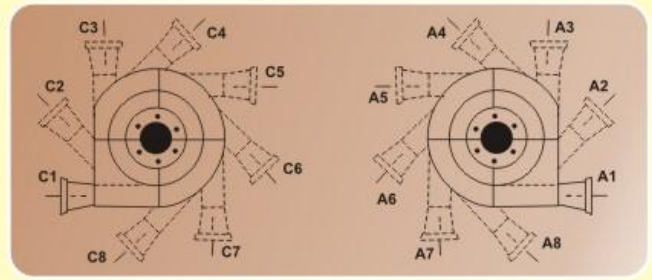
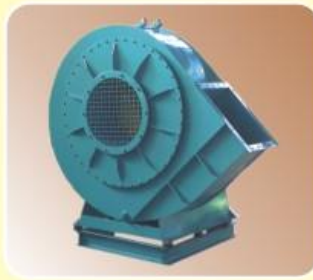
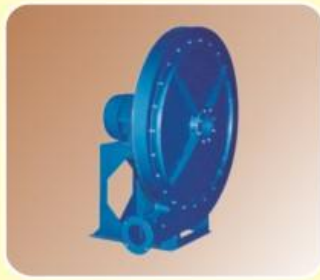
Range : 9m<sup>3</sup>/min. to 80m<sup>3</sup>/min.

- The standard package is single stage arrangement.
- Rigid common base makes the package run at least vibration.
- Special motor base gives the most possibility for different motor alignment very easy.
- Easy for maintenance and vacuum tank cleaning.



Range : 9m<sup>3</sup>/min. to 80m<sup>3</sup>/min

# AIR POLLUTION CONTROL EQUIPMENTS & SYSTEMS



## TECHNICAL DATA FOR CENTRIFUGAL BLOWERS

PRESSURE INCHES W.G.	1"	2"	3"	4"	6"	8"	10"	12"	16"	20"	24"	28"	32"	36"	42"	48"	56"
MOTOR H.P.	APPROXIMATE CAPACITIES IN CUBIC FEET PER MINUTE AT N.T.P.																
0.25	750	400	---	---	---	---	---	---	---	---	---	---	---	---	---	---	---
1.5	1500	800	500	400	---	---	---	---	---	---	---	---	---	---	---	---	---
1	3000	1600	1000	800	675	300	250	225	150	---	---	---	---	---	---	---	---
2	6000	3200	2100	1600	1000	650	525	460	340	280	---	---	---	---	---	---	---
3	8000	4800	3140	2400	1500	1080	1000	765	530	420	320	---	---	---	---	---	---
5	11500	7350	5150	4000	3000	1800	1600	1350	900	720	600	500	---	---	---	---	---
7.5	14500	11000	7500	5500	4000	3000	2550	2000	1490	1080	900	850	720	---	---	---	---
10	20000	13400	9750	7750	5250	4000	3250	2900	2000	1575	1300	1175	1000	925	---	---	---
12.5	27500	17000	12500	9750	6750	5100	4300	3575	2475	1970	1640	1400	1230	1150	900	---	---
15	33000	30000	15250	12000	8250	6250	5500	4300	3100	2370	2025	1700	1550	1400	1080	---	---
20	45000	20000	19500	15400	11000	7500	6800	5500	4320	3350	2700	2400	2100	1750	1440	1150	1000
25	70000	40000	25000	20000	12500	8750	8000	7200	5400	4250	3375	3000	2550	2325	1800	1250	1250
30	80000	50000	30000	25000	18000	10500	9500	8500	6500	5200	4050	3500	3175	2800	2250	1800	1500
40	100000	75000	45000	35000	23000	18000	11200	10500	7800	6500	5200	4400	3850	3300	2800	2250	1900
50	120000	80000	55000	40000	30000	22000	18000	12000	9500	8000	6750	5900	5250	4600	3700	3000	2450
60	140000	100000	75000	55000	38000	28000	22000	18000	11000	9300	7900	6600	6000	5250	4350	3250	---
75	160000	132000	90000	65000	45000	34000	27000	22000	16000	10500	9000	7300	6250	5400	4675	---	---
100	180000	160000	120000	85000	60000	46000	37000	28000	25000	18000	15000	12000	11000	10000	8000	---	---
120	200000	180000	140000	110000	70000	55000	45000	30000	30000	24000	20000	15000	13000	11500	9000	---	---
150	262000	230000	160000	120000	80000	60000	52000	40000	35000	30000	25000	20000	15000	12500	11000	---	---

### HOW TO ORDER :

When sending enquiries for fan, kindly specify :

1. Volume in cfm or m<sup>3</sup>/hr.
2. Total/static pressure in inches, water gauge or in mm. Kindly specify if it is at working conditions or at NTP.
3. Temperature humidity conditions in fan.
4. Direction of rotation-clockwise or anti-clockwise of the impeller when viewing from Suction end and discharge position. Various discharge positions are shown above in the diagram.  
If this information is not given, we will supply the fan with the direction of rotation as clockwise, discharge position as 'C1' and the discharge cross section as round.
5. Discharge cross section - rectangular or round.

## LAKHI BLOWER INDUSTRIES

J-3003, 4<sup>th</sup> Phase, GIDC., VAPI - 396 195. Dist. Valsad, Gujarat.

Tel.: +91 260 2422758 Fax No.: +91 260 2428941

E mail : lakhiblower@gmail.com / lakhi\_blower@yahoo.co.in

Website : www.lakhiblower.com



**LAKHI  
BLOWER  
INDUSTRIES**



# TWIN LOBE COMPRESSORS

Application Industries

Cement Industries  
 Sugar Industries  
 Paper Industries  
 Pollution Control Plants  
 Effluent Treatments Plants  
 Textile Industries  
 Gas Booster  
 Fertilizer Industries  
 Chemical Industries  
 Glass / Bulb Industries

MODEL	$\Delta P$ mbar >>		100		200		300		400		500		600		700		800		900	
	M/c rpm	motor rpm	m <sup>3</sup> /hr	BKw	m <sup>3</sup> /hr	BKw	m <sup>3</sup> /hr	BKw	m <sup>3</sup> /hr	BKw	m <sup>3</sup> /hr	BKw	m <sup>3</sup> /hr	BKw	m <sup>3</sup> /hr	BKw	m <sup>3</sup> /hr	BKw	m <sup>3</sup> /hr	BKw
LBI - 010	1196	1450	72	0.32	57	0.65	46	0.97	36	1.29	28	1.61								
	1368	1450	89	0.37	73	0.74	62	1.11	52	1.47	44	1.64								
	1610	1450	111	0.44	96	0.87	85	1.30	75	1.73	67	2.17	60	2.60						
	1933	1450	142	0.52	127	1.04	115	1.56	106	2.06	97	2.60	90	3.12	83	3.64				
	2239	2900	171	0.60	155	1.21	144	1.81	134	2.41	126	3.01	119	3.61	112	4.22	106	4.82		
	2549	2900	200	0.69	185	1.37	173	2.06	164	2.74	155	3.43	148	4.11	141	4.80	135	5.49	129	6.17
	2900	2900	233	0.78	218	1.56	206	2.34	197	3.12	188	3.90	181	4.68	174	5.46	168	6.24	162	7.02
LBI - 012	1073	965	113	0.47	93	0.93	78	1.40	66	1.86	55	2.33	45	2.80						
	1386	1450	157	0.60	138	1.19	123	1.78	111	2.38	100	2.97	90	3.56	81	4.16				
	1610	1450	194	0.70	174	1.40	160	2.10	147	2.80	136	3.49	126	4.19	117	4.89	109	5.59		
	1933	1450	243	0.84	223	1.68	208	2.52	196	3.36	185	4.20	175	5.03	166	5.87	158	6.71	150	7.55
	2239	2900	289	0.97	269	1.95	255	2.92	242	3.89	231	4.86	221	5.83	212	6.80	204	7.77	196	8.74
	2549	2900	336	1.11	316	2.21	301	3.32	289	4.43	278	5.53	268	6.64	259	7.74	251	8.85	243	9.95
	2900	2900	389	1.26	369	2.52	354	3.78	342	5.03	331	6.29	321	7.55	312	8.81	304	10.10	296	11.40
LBI - 014	1196	1450	191	0.71	168	1.41	151	2.12	136	2.83	122	3.53	110	4.24	99	4.94				
	1368	1450	227	0.81	204	1.62	186	2.42	171	3.23	158	4.04	146	4.84	135	5.65	125	6.46		
	1610	1450	277	0.95	254	1.90	236	2.65	221	3.80	208	4.75	196	5.70	185	6.65	174	7.60	165	8.55
	1933	1450	343	1.14	320	2.28	302	3.42	287	4.56	274	5.70	262	6.84	251	7.98	241	9.13	231	10.30
	2239	2900	406	1.32	383	2.64	365	3.97	350	5.29	337	6.61	325	7.93	314	9.25	304	10.60	294	11.90
	2549	2900	470	1.51	447	3.01	429	4.51	414	6.02	401	7.52	389	9.02	378	10.60	368	12.10	358	13.60
	2900	2900	542	1.71	519	3.42	502	5.14	487	6.85	473	8.56	461	10.30	450	12.00	440	13.70	431	15.40
LBI - 016	1073	965	272	0.98	242	1.96	219	2.94	199	3.91	182	4.39	166	5.87	151	6.85				
	1275	1450	336	1.17	306	2.33	283	3.49	263	4.65	246	5.81	230	6.98	216	8.14	202	9.30		
	1450	1450	392	1.32	362	2.65	339	3.97	319	5.29	302	6.61	286	7.93	271	9.25	258	10.60	245	11.90
	1810	1450	506	1.65	476	3.30	453	4.95	434	6.60	416	8.25	400	9.90	385	11.60	372	13.20	359	14.90
	2127	1450	607	1.94	577	3.88	554	5.82	534	7.76	517	9.70	501	11.70	487	13.60	473	15.50	460	17.50
	2391	2900	691	2.18	661	4.36	638	6.54	618	8.72	601	10.90	585	13.10	570	15.30	557	17.50	544	19.60
	2732	2900	800	2.49	770	4.98	746	7.74	727	9.96	709	12.50	694	15.00	679	17.50	665	19.90	652	22.40
LBI - 019	916	965	361	1.27	323	2.55	292	3.82	266	5.09	243	6.36	221	7.63	202	8.90				
	1078	965	440	1.50	401	3.00	371	4.49	345	5.91	321	7.48	300	8.98	280	10.50	262	12.10		
	1375	1450	584	1.91	546	3.82	515	5.73	489	7.64	466	9.54	444	11.50	425	13.40	406	15.30	389	17.20
	1620	1450	703	2.25	665	4.05	634	6.75	608	9.00	585	11.30	563	13.50	544	15.80	525	18.00	508	20.30
	1825	1450	803	2.54	764	5.07	734	7.60	708	10.20	684	12.70	663	15.20	643	17.80	625	20.30	607	22.80
	2071	1450	923	2.88	884	5.75	853	8.63	827	11.50	804	14.40	783	17.30	763	20.10	744	23.00	727	25.90
	2320	2900	1044	3.22	1005	6.44	974	9.66	948	12.90	925	16.10	904	19.30	884	22.60	865	25.80	848	29.00

# PERFORMANCE DATA



## Special Features

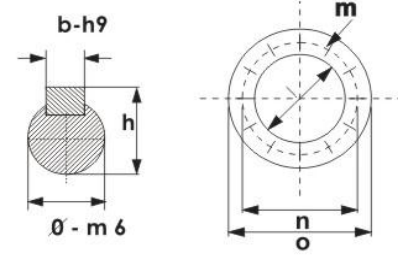
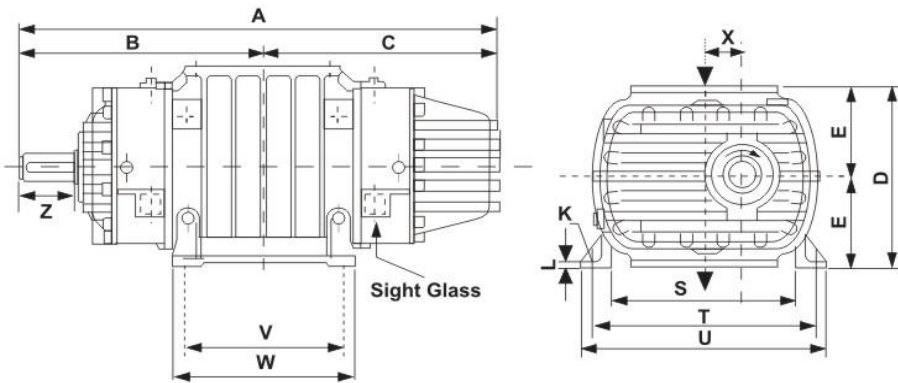
- 100% Oil Free Air
- Air Cooled Design
- Continuous Air Flow
- Special Sealing Arrangement
- Suitable for Gases other than air
- V-Belt drive can be used for complete range
- Shaft centre heights to suit motor as per IEC frame size
- Air Flow can be vertical or horizontal with adjustable feet

MODEL	$\Delta P$ mbar >>		100		200		300		400		500		600		700		800		900	
	M/c rpm	motor rpm	m <sup>3</sup> /hr	BKw	m <sup>3</sup> /hr	BKw	m <sup>3</sup> /hr	BKw	m <sup>3</sup> /hr	BKw	m <sup>3</sup> /hr	BKw	m <sup>3</sup> /hr	BKw	m <sup>3</sup> /hr	BKw	m <sup>3</sup> /hr	BKw	m <sup>3</sup> /hr	BKw
LBI - 022	930	980	640	2.14	587	4.27	545	6.40	508	8.54	475	10.70	445	12.80	417	15.00	390	17.10		
	1095	980	772	2.51	719	5.03	677	7.54	641	10.10	608	12.60	577	15.10	549	17.90	523	20.10		
	1300	1450	937	2.98	884	5.97	842	8.95	805	12.00	772	14.90	742	17.90	714	20.90	687	23.90	662	26.90
	1450	1450	1057	3.33	1004	6.65	962	9.98	926	13.30	893	16.70	863	20.00	834	23.30	808	26.60	783	30.00
	1625	1450	1198	3.73	1145	7.46	1103	11.20	1065	14.90	1033	18.70	1003	22.40	975	26.10	948	29.60	923	33.60
	1825	1450	1358	4.19	1306	8.37	1263	12.60	1227	16.80	1194	21.00	1164	25.10	1136	29.30	1109	33.50	1084	37.70
	2035	1450	1527	4.67	1474	9.34	1432	14.00	1395	18.70	1362	23.40	1332	28.00	1304	32.70	1278	37.40	1253	42.00
LBI - 026	875	965	970	3.20	900	6.39	845	9.59	797	12.80	755	16.00	716	19.20	680	22.40	647	25.60	615	28.80
	980	985	1104	3.58	1034	7.16	979	10.80	931	14.30	869	17.90	850	21.50	814	25.10	781	28.70	749	32.20
	1095	1450	1250	4.00	1181	8.00	1126	12.00	1078	16.00	1036	20.00	997	24.0	961	28.00	927	32.00	895	36.00
	1230	1450	1423	4.49	1353	8.99	1298	13.50	1250	18.00	1208	22.50	1169	27.00	1133	31.50	1100	36.00	1068	40.50
	1375	1450	1608	5.02	1538	10.10	1483	15.10	1435	20.10	1393	25.10	1354	30.20	1318	35.20	1285	40.20	1253	45.20
LBI - 030	1535	1450	1812	5.61	1742	11.20	1687	16.80	1640	22.50	1597	28.10	1559	33.70	1522	39.30	1489	44.90	1457	50.50
	1720	1450	2048	6.28	1978	12.60	1923	18.90	1876	25.20	1833	31.40	1795	37.70	1759	44.00	1725	50.30	1693	56.60
	716	965	1289	4.28	1199	8.56	1129	12.90	1069	17.10	1015	21.40	967	26.70	922	30.00	879	34.30		
	807	965	1479	4.83	1389	9.65	1318	14.50	1258	19.30	1205	24.10	1156	29.00	1111	33.80	1069	38.60		
	909	965	1691	5.44	1601	10.90	1530	16.30	1470	21.80	1417	27.20	1368	32.60	1323	38.10	1281	43.50	1241	48.90
	1024	965	1930	6.12	1840	12.30	1770	18.40	1710	24.50	1656	30.60	1607	36.80	1562	42.90	1520	49.00	1481	55.10
	1155	1450	2203	6.91	2113	13.80	2042	20.70	1982	27.60	1929	34.60	1880	41.50	1835	48.40	1790	55.30	1753	62.20
LBI - 036	1287	1450	2478	7.70	2387	15.40	2317	23.10	2257	30.80	2203	38.50	2155	46.20	2110	53.90	2068	61.60	2028	69.30
	1450	1450	2817	8.67	2727	17.40	2656	26.00	2596	34.70	2543	43.40	2494	52.00	2449	60.70	2407	69.40	2367	78.00
	716	955	2311	7.43	2181	14.90	2079	22.30	1992	29.70	1914	37.10	1843	44.60	1777	52.00	1716	59.40	1657	66.80
	807	965	2640	8.37	2511	16.80	2409	25.10	2321	33.50	2244	41.90	2173	50.20	2107	58.60	2045	67.00	1987	75.30
	909	965	3010	9.43	2880	18.90	2778	28.30	2691	37.70	2613	47.10	2542	56.60	2476	66.00	2414	75.40	2356	84.80
	1024	965	3426	10.60	3296	21.30	3194	31.90	3107	42.50	3029	53.10	2958	63.70	2892	74.30	2831	84.90	2773	95.60
	1155	1450	3900	12.00	3771	24.00	3669	35.90	3581	47.90	3504	59.90	3433	71.90	3367	83.80	3305	95.80	3247	109
	1278	1450	4378	13.40	4249	26.70	4147	40.10	4059	53.40	3982	66.70	3911	80.10	3845	93.40	3783	108	3725	121
LBI - 042	1450	1450	4969	15.10	4839	30.10	4737	45.10	4650	60.20	4572	75.20	4501	90.20	4435	106	4373	121	4315	136
	643	725	3289	10.50	3115	21.00	2978	31.20	2860	41.90	2755	52.40	2659	62.90	2570	73.30	2487	83.80	2408	94.30
	760	965	3955	12.40	3781	24.80	3644	37.20	3526	49.50	3421	61.90	3325	74.30	3236	86.70	3153	99.10	3074	112
	856	965	4501	14.00	4328	27.90	4191	41.90	4073	55.80	3968	69.70	3872	83.70	3783	97.60	3699	112	3620	126
	965	965	5122	15.70	4948	31.50	4811	47.30	4694	62.90	4588	78.60	4492	94.30	4403	111	4320	127	4241	142
	1088	1450	5822	17.80	5649	35.50	5511	53.20	5393	70.90	5289	88.60	5193	107	5104	125	5020	143	4941	160
	1212	1450	6528	19.80	6354	39.50	6277	59.30	6100	79.00	5995	98.70	5899	119	5809	139	5726	159	5647	178

Air Cooled

**BLOWER DIMENSION - MM**

\* Vertical Flow Execution



Model	A	B	C	D	E	K	L	S	T	U	V	W	X	Z	b	h	$\sigma$	l	m	n	o
LBI-10	514	252	262	224	112	14	12	200	280	310	130	170	36	60	8	28	25	70	4xM12	130	160
LBI-12	602	305	297	264	132	14	15	230	310	350	160	200	42	80	8	33	30	80	4xM16	150	190
LBI-14	644	327	317	280	140	18	15	260	340	380	180	220	48	80	10	38.5	35	100	4xM16	170	210
LBI-16	707	352	355	320	160	18	15	270	360	400	210	250	54	80	10	41.5	38	125	8xM16	200	240
LBI-19	820	425	395	360	180	18	18	310	400	440	250	300	63	110	12	45.5	42	150	8xM16	225	265
LBI-22	905	465	440	400	200	18	20	370	470	510	300	350	74	110	14	52	48	175	8xM16	255	295
LBI-26	1010	515	495	450	225	18	20	430	530	580	355	405	86	140	18	64	60	200	8xM16	280	320
LBI-30	1165	590	575	500	250	22	20	500	620	670	390	440	100	140	20	74.5	70	250	12xM16	335	375
LBI-36	1330	690	640	630	315	22	25	560	700	760	480	540	120	170	22	85	80	300	12xM20	395	440
LBI-42	1460	745	715	710	355	26	25	640	800	860	580	640	140	170	25	95	90	350	12xM20	445	490
LBI-50	1755	890	865	850	425	30	35	380	900	980	650	770	167	210	28	111.5	105	400	16xM20	495	540
LBI-70	1935	1033	902	1002	501	30	50	690	810	970	990	1060	167.5	200	28	106.5	100	400	16xM27	516	564



ROOTS INDIA COMPANY an ISO 9001-2008 and premium quality equipment manufacturer and solution provider, offers packaged system for conveying / feeding / Cement / Fly Ash into silos at Batching Plant sites. These Systems are part of modern and efficient construction industry practices contributing to improvement.

**BAG FEEDING SYSTEM**

## CEMENT / FLY ASH FEEDING SYSTEM

ROOTS INDIA COMPANY conveying system for the purpose of conveying cement / Fly Ash & similar product in fine powder material around density like cement. The overall conveying distances horizontal will be 5 to 7 Mtrs and Vertical will be 15 to 18 Mtrs. approximately. Conveying rate depending upon the characteristic of material.

This system also using in Unloading the bulker in to the silo. Alternatively using this system for both purpose, Cement bag feeding & Bulker Unloading. We also arrange this system on trolley mounted.



Specification	Feature	Power HP	Rate in T/Hr. (For Bags)	Rate in T/Hr. (For Bulker)	Operation Mode
LBI-2	Screw Pump	70	16-18	25-30	Single-Alternate
LBI-3	Screw Pump	80	22-25	40-50	Single-Alternate



### FEATURES:

- Portability
- Dual Functions
- AVP Mounting
- Oil Free Conveyance
- Dual Over Pressure Safety
- Efficient Filter